

Aphid ID & Biocontrol

[North American Aphid Checklist](#) **NEW!**

[How to find aphids](#) ▶

[How to identify aphids](#) ▶

[Identify common aphids](#) ▶

[Polyphagous aphids](#) ▶

[Aphid-colouration](#) ▶

[APHID GENERA](#) ▶

[Aphid-eating Birds](#) **NEW!**

[Ladybirds](#) **NEW!**

['True-bugs'](#) **NEW!**

New & Expanded pages

[Macrosiphum weberi](#) **NEW!**

[Aphis odinae](#) **NEW!**

[Euceraphis gillettei](#) **NEW!**

[Euceraphis papyrificicola](#) **NEW!**

[Gypsoaphis oestlundi](#) **NEW!**

[Daktulosphaira vitifoliae](#) **NEW!**

[Eriosoma americanum](#) **NEW!**

[Chaitophorus ramicola](#) ▶

[Colopha graminis](#) **NEW!**

[Acyrthosiphon cyparissiae](#) **NEW!**

[Catamergus kickapoo](#) **NEW!**

[Aphis origani](#) **NEW!**

[Stomaphis graffii](#) ▶

ID Aphids by plant

[Aphids on apple](#) ▶

[Aphids on beech](#) ▶

[Aphids on berries](#) ▶

[Aphids on birch](#) ▶

[Aphids on dogwood](#) ▶

[Aphids on elm](#) ▶

[Aphids on hazel](#) ▶

[Aphids on maple](#) ▶

[Aphids on stinging nettles](#) ▶

Cinara acutirostris

Corsican pine aphid

On this page: [Identification & Distribution](#) [Biology & Ecology](#) [Other aphids on the same host](#) [Damage & Control](#)

Identification & Distribution:

Cinara acutirostris [apterae](#) are dark brown to pale bronze, with a pattern of dark markings, a pale grey longitudinal line of wax dust and lateral wax patches on the [dorsum](#). The appearance of the species is very similar to *Cinara pini* so we give several discriminating characteristics. The combined length of the last two [rostral](#) segments (RIV+V) is 1.2 to 1.5 times the length of the second [tarsal](#) segment (cf. *Cinara pini* which has the length of RIV+V less than 1.2 times the length of the second tarsal segment). Also the length of RV is more than 3 times its basal width (cf. *Cinara pini* where the length of RV is less than 3 times its basal width). The [siphuncular](#) cones of *Cinara acutirostris* are large, prominent and black. There are several rather long hairs, up to 100 µm long, between the siphuncular cones (cf. *Cinara pini* where the longest hairs are only 6-50 µm long.) The body length of adult *Cinara acutirostris* apterae is 2.6-4.1 mm.

[Unlock image row.](#)



Cinara acutirostris [alates](#) are similar to their apterae, but have predominantly dark legs with pale areas closest to the body. The micrographs below are dorsal views of a *Cinara acutirostris* aptera and alate in alcohol.

[Unlock image row.](#)



[Oviparae](#) are dark brown with white wax marks laterally on the [dorsum](#). Males are small (around 2.7 mm) and wingless, and have a slender body form.

Cinara acutirostris is found on twigs of Corsican Pine (*Pinus nigra*) and Stone Pine (*Pinus pinea*). [Oviparae](#) and males can be found in October, and the species overwinters as eggs laid on the needles. It is found in western, southern and

[Aphids on oak ▶](#)

[Aphids on pear ▶](#)

[Aphids on plum & cherry ▶](#)

[Aphids on spruce ▶](#)

[Aphids on pine ▶](#)

[Aphids on poplar & aspen ▶](#)

[Aphids on rose ▶](#)

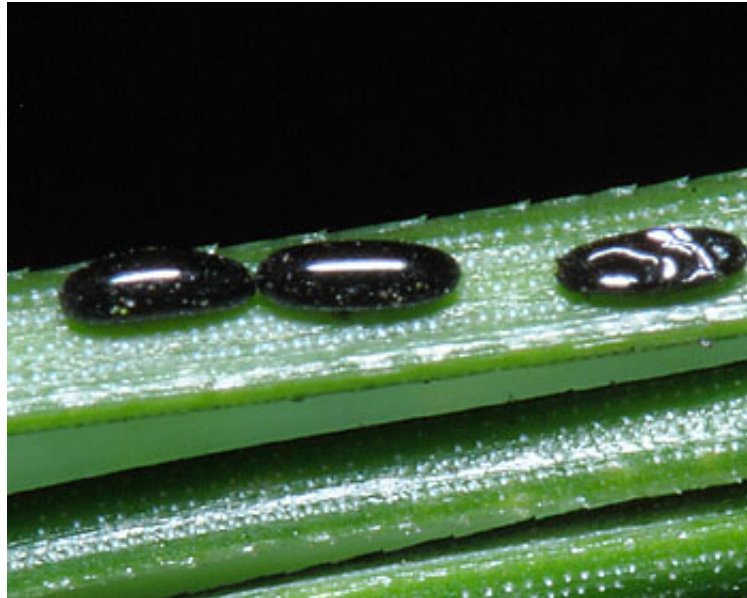
[Aphids on walnut ▶](#)

[Aphids on willow ▶](#)

central Europe, China, and introduced to Argentina. *Cinara acutirostris* is commonly classed as an invasive species because of its introduction to countries along with Corsican Pine.

Biology & Ecology:

Cinara acutirostris overwinters as eggs which are laid on the pine needles in October and November.



The first picture above shows several eggs of this species. [Buchholz & Scheurer \(2000\)](#) showed that a period of frost (-5 to -15°C) for several weeks produced a higher ratio of hatching [fundatrices](#) than a period of around zero degrees. The eggs hatch in March and April to give young [nymphs](#) as shown in the second picture above. These aggregate in tight clusters on the branches.



This image shows a young nymph - note the (proportionally) very long [rostrum](#) held under the body. It has to be similar in length to the adult's rostrum since it occupies the same feeding site.



These clusters of young nymphs of Corsican pine aphid in early spring were tended (and vigorously defended) by southern wood ants (*Formica rufa*). At this time of year the ants seem to be unusually aggressive to intruders (in this case the photographer), presumably because the ants immediately post-hibernation are hungry and keen to protect their honeydew supply.



These two pictures show southern wood ants attending mature colonies of Corsican pine aphids in mid-summer. [Binazzi & Scheurer \(2009\)](#) class *Cinara acutirostris* as one of those species where ant attendance is 'compulsory' (obligate), and we have never found this species unattended.

Other aphids on same host:

- Blackman & Eastop list [21 species of aphid](#) as feeding on Corsican pine (*Pinus nigra*) worldwide, and provide formal identification keys ([Show World list](#)).

Of those aphid species, [Baker \(2015\)](#) lists 12 as occurring in Britain ([Show British list](#)).

Select list of aphids (above) to show here.

- Blackman & Eastop list [19 species of aphid](#) as feeding on Italian stone pine (*Pinus pinea*) worldwide, and provide formal identification keys ([Show World list](#)).

Of those aphid species, [Baker \(2015\)](#) lists 11 as occurring in Britain ([Show British list](#)).

Select list of aphids (above) to show here.

Damage and control

Infestations of *Cinara acutirostris* are reported to cause economic damage ([Delfino & Binazzi, 2002](#)). In Sussex extensive browning of the needles of Corsican Pine appeared to be associated with heavy infestations of his species, leading us to conclude (wrongly, it would seem) that the browning was feeding damage by this species.



The immediate cause of browning was red band needle blight of pine, caused by the fungus *Mycosphaerella* (=Dothiostroma) *pini*. This disease causes premature needle defoliation, loss in timber yield and sometimes tree mortality ([Brown et al. 2003](#)). The apparent association between browning and aphid infestation may reflect infected trees being more attractive to aphids, or aphids may have a role in spreading the fungus between trees. Alternatively of course the observed association may have arisen by simple chance!

Acknowledgements

Whilst we make every effort to ensure that identifications are correct, we cannot absolutely warranty their accuracy. We have mostly made identifications from high resolution photos of living specimens, along with host plant identity. In the great majority of cases, identifications have been confirmed by microscopic examination of preserved specimens. We have used the keys

and species accounts of [Blackman & Eastop \(1994\)](#) and [Blackman & Eastop \(2006\)](#) supplemented with [Blackman \(1974\)](#), [Stroyan \(1977\)](#), [Stroyan \(1984\)](#), [Blackman & Eastop \(1984\)](#), [Heie \(1980-1995\)](#), [Dixon & Thieme \(2007\)](#) and [Blackman \(2010\)](#). We fully acknowledge these authors as the source for the (summarized) taxonomic information we have presented. Any errors in identification or information are ours alone, and we would be very grateful for any corrections. For assistance on the terms used for aphid morphology we suggest the [figure](#) provided by [Blackman & Eastop \(2006\)](#).

Useful weblinks

References

- **Binazzi, A. & Scheurer, S. (2009).** *Atlas of the honeydew producing conifer aphids of Europe*. Aracne. 132 pp. [Introduction](#)
- **Brown, A. et al. (2003).** *Red Band Needle Blight of Pine*. Forestry Commission Information Note. [Full text](#)
- **Buchholz, S. & Scheurer, S. (2000).** The influence of the length of frosty periods on emergence of fundatrices of selected Cinarinae (Stenomorrhyncha, Lachnidae). *Entomologica Brasiliensia* **22**, 143-147. [Abstract](#)
- **Delfino, M.A. & Binazzi, A. (2002).** Áfidos de coníferos en la Argentina (Hemiptera: Aphididae). *Rev. Soc. Entomol. Argent.* **61** (3-4), 27-36.

Search this site

Comments, questions, corrections? Please [email](#) info@influentialpoints.com

If you like our critical approach to analysis you will really like our [hyperbook](#):
Avoiding and Detecting Statistical Malpractice (Design & Analysis for Biologists, with R).



Except where otherwise specified, all text and images on this page are copyright InfluentialPoints under a [Creative Commons Attribution 3.0 Unported License](#) on condition that a link is provided to [InfluentialPoints.com](#)

[home](#) [sitemap](#) [about us](#)